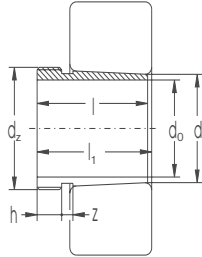


Abziehhülsen
 $d_0 = 35$ bis 95 mm

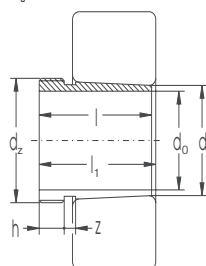


Abmessungen							Hülsen- bezeichnung	zugehörige Abzieh- mutter	Gewicht
d_0	d	d_z	l	l_1	h	z			
mm									kg
35	40	M45x1.5	30	32	6	5	AH308	KM9	0.093
	40	M45x1.5	40	43	7	6	AH2308	KM9	0.129
40	45	M50x1.5	32	34	6	6	AH309	KM10	0.112
	45	M50x1.5	44	47	7	6	AH2309	KM10	0.163
45	50	M55x2	35	38	7	6	AH310X	KM11	0.138
	50	M55x2	50	53	8	6	AH2310X	KM11	0.236
50	55	M60x2	37	40	7	6	AH311X	KM12	0.162
	55	M60x2	54	57	9	6	AH2311X	KM12	0.257
55	60	M65x2	40	43	8	7	AH312X	KM13	0.194
	60	M65x2	57	61	10	7	AH2312X	KM13	0.299
60	65	M75x2	42	45	8	7	AH313	KM15	0.256
	65	M75x2	61	64	11	7	AH2313	KM15	0.399
65	70	M80x2	44	47	8	7	AH314	KM16	0.290
	70	M80x2	65	68	12	7	AH2314X	KM16	0.466
70	75	M85x2	46	49	8	7	AH315	KM17	0.326
	75	M85x2	69	72	12	7	AH2315X	KM17	0.536
75	80	M90x2	48	52	8	7	AH316	KM18	0.367
	80	M90x2	72	75	12	7	AH2316X	KM18	0.602
85	85	M95x2	52	56	9	7	AH317X	KM19	0.431
	85	M95x2	75	78	13	7	AH2317X	KM19	0.676
85	90	M100x2	53	57	9	7	AH318X	KM20	0.465
	90	M100x2	63	67	10	7	AH3218X	KM20	0.578
	90	M100x2	80	83	14	7	AH2318X	KM20	0.777
90	95	M105x2	57	61	10	8	AH319X	KM21	0.537
	95	M105x2	85	89	15	8	AH2319X	KM21	0.888
	100	M110x2	59	63	10	8	AH320X	KM22	0.586
95	100	M110x2	75	77	12	7	AH3220X	KM22	0.768
	100	M110x2	90	94	15	8	AH2320X	KM22	1.000



Abziehhülsen

$d_0 = 100$ bis 180 mm



Abmessungen								Hülsen- bezeichnung	zugehörige Abzieh- mutter	Gewicht
d_0	d	d_2	l	l_1	h	z	kg			
mm										kg
100	110	M125x2	68	72	11	8	AH3122	KM25	1.280	
105	110	M120x2	68	72	11	8	AH3122X	KM24	0.786	
	110	M125x2	82	86	12	8	AH3222X	KM25	1.060	
110	110	M125x2	98	102	16	8	AH2322X	KM25	1.350	
	120	M140x2	75	79	12	8	AH3124	KM28	1.670	
	120	M140x2	105	109	17	8	AH2324	KM28	2.470	
115	120	M130x2	60	64	13	8	AH3024X	KM26	0.737	
	120	M130x2	75	79	12	8	AH3124X	KM26	0.948	
	120	M135x2	90	94	14	8	AH3224X	KM27	1.310	
	120	M135x2	105	109	17	8	AH2324X	KM27	1.610	
125	130	M140x2	67	71	14	8	AH3026X	KM28	0.907	
	130	M140x2	78	82	12	8	AH3126X	KM28	1.080	
	130	M145x2	98	102	15	8	AH3226X	KM29	1.580	
	130	M145x2	115	119	19	8	AH2326X	KM29	1.970	
135	140	M150x2	68	73	14	10	AH3028X	KM30	0.996	
	140	M150x2	83	88	14	10	AH3128X	KM30	1.260	
	140	M155x3	104	109	15	10	AH3228X	KM31	1.810	
	140	M155x3	125	130	20	10	AH2328X	KM31	2.340	
145	150	M160x3	72	77	15	10	AH3030X	KM32	1.120	
	150	M165x3	96	101	15	10	AH3130X	KM33	1.750	
	150	M165x3	114	119	18	10	AH3230X	KM33	2.210	
	150	M165x3	135	140	24	10	AH2330X	KM33	0.000	
150	160	M170x3	77	82	16	10	AH3032	KM34	2.010	
	160	M180x3	103	108	16	10	AH3132	KM36	3.180	
	160	M180x3	124	130	20	12	AH3232	KM36	4.020	
	160	M180x3	140	146	24	12	AH2332	KM36	4.690	
160	170	M180x3	85	90	17	10	AH3034	KM36	2.400	
	170	M190x3	104	109	16	10	AH3134	KM38	3.410	
	170	M190x3	134	140	24	12	AH3234	KM38	3.410	
	170	M190x3	146	152	24	12	AH2334	KM38	5.230	
170	180	M190x3	92	98	17	12	AH3036	KM38	2.800	
	180	M200x3	116	122	19	12	AH3136	KM40	4.160	
	180	M200x3	105	110	17	10	AH2236	KM40	3.670	
	180	M200x3	140	146	24	12	AH3236	KM40	5.290	
	180	M200x3	154	160	26	12	AH2336	KM40	5.940	
180	190	Tr205x4	96	102	17	12	AH3038	HML41T	3.280	
	190	Tr210x4	125	131	19	12	AH3138	HM42T	4.730	
	190	Tr210x4	112	117	18	10	AH2238	HM42T	4.150	
	190	Tr210x4	160	167	26	14	AH2338	HM42T	6.530	
	190	Tr210x4	145	152	25	14	AH3238	HM42T	5.800	